

## Installation Instruction

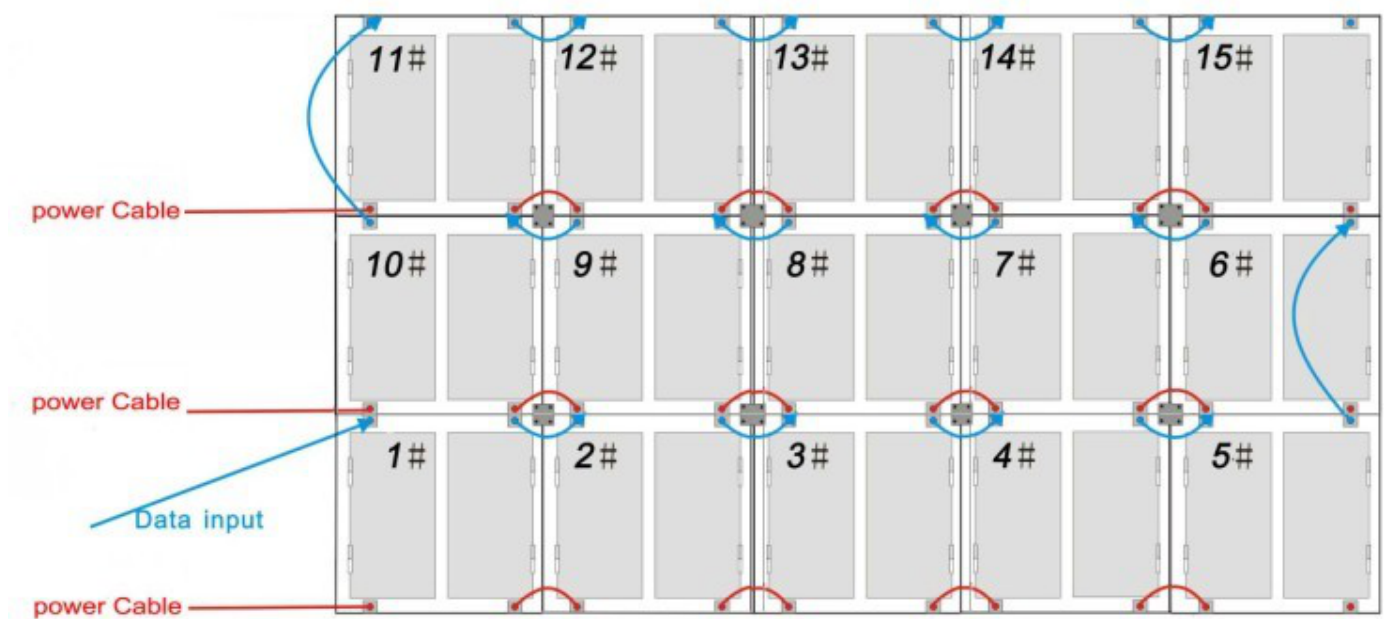
### Step 1

After you open the package boxes and take out all the cabinets, please confirm you are using the **220V Voltage, this is very important., and all the testing in our factory were all 220V used....**so, pls remember to do this step before you install the screen.

### Step 2

Assembling these **15 cabinets 5x3**.

Pls see the connection Diagram and some relative photos as below.



## Back viewing

## Linsn LED Control System and LEDStudio Installation Manual



**Signal and Power Cable, and Iron Tighten Plate Connection Between Cabinets.**



**The Whole Screen Connection Look Like**

# [Linsn](#) LED Control System and LEDStudio Installation Manual

## Step 3

Install the software into your computer, we have prepare the original software CD for you, the **series number was"888888"** when you are doing the installation.

## Step 4

Fixing the **Sending card(Or Sending Box)** and **display card** in the computer.

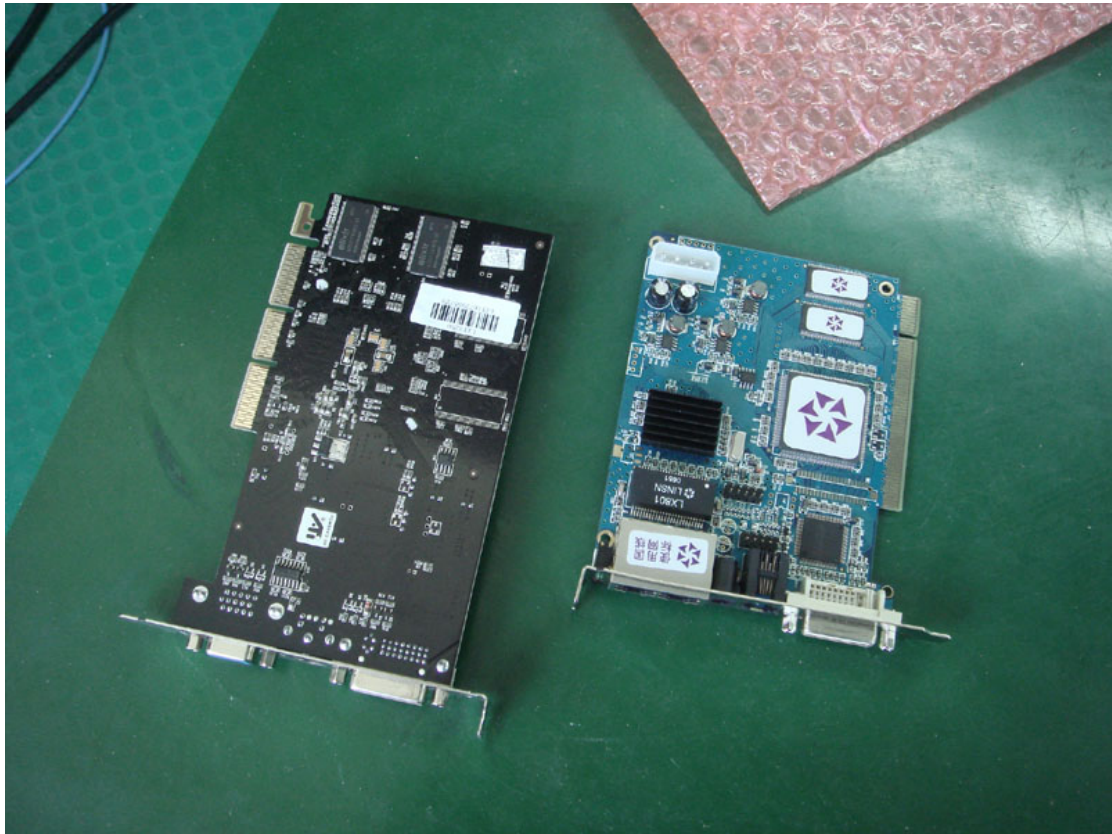
Pls see the relative photos as below.



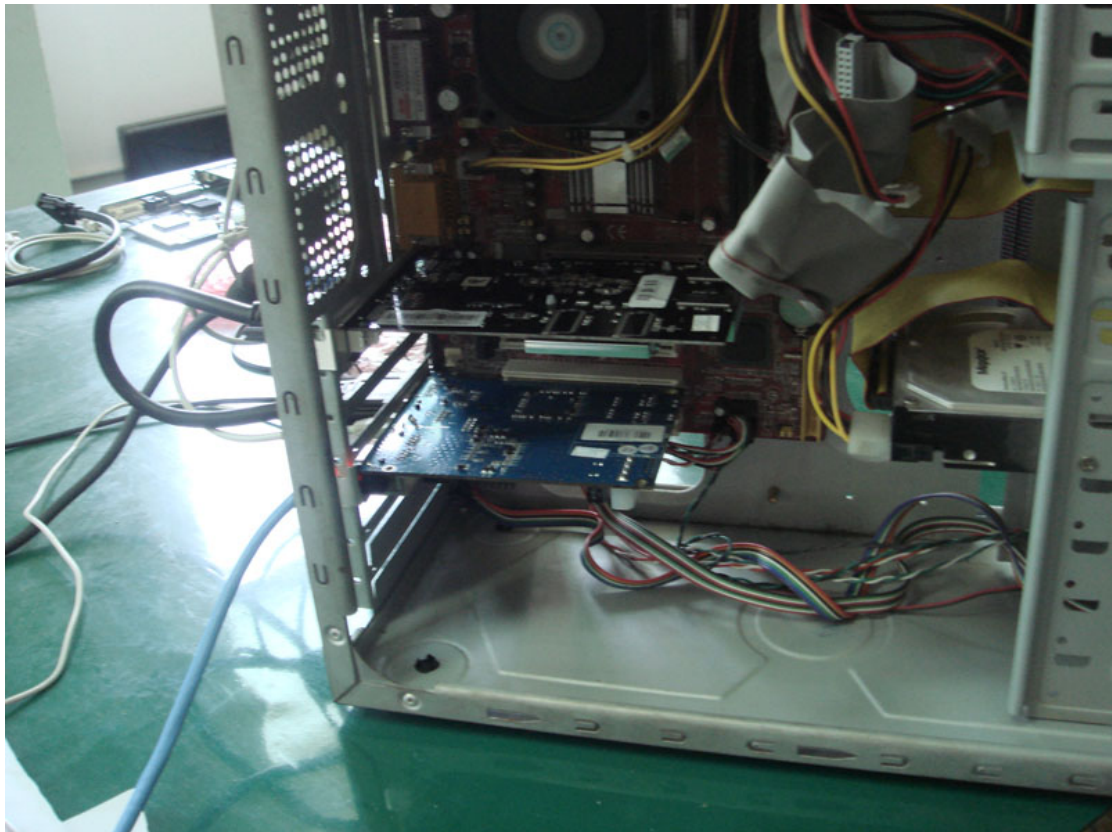
**RS232 Cable(White) and DVI Cable(Black)**



## [Linsn](#) LED Control System and LEDStudio Installation Manual

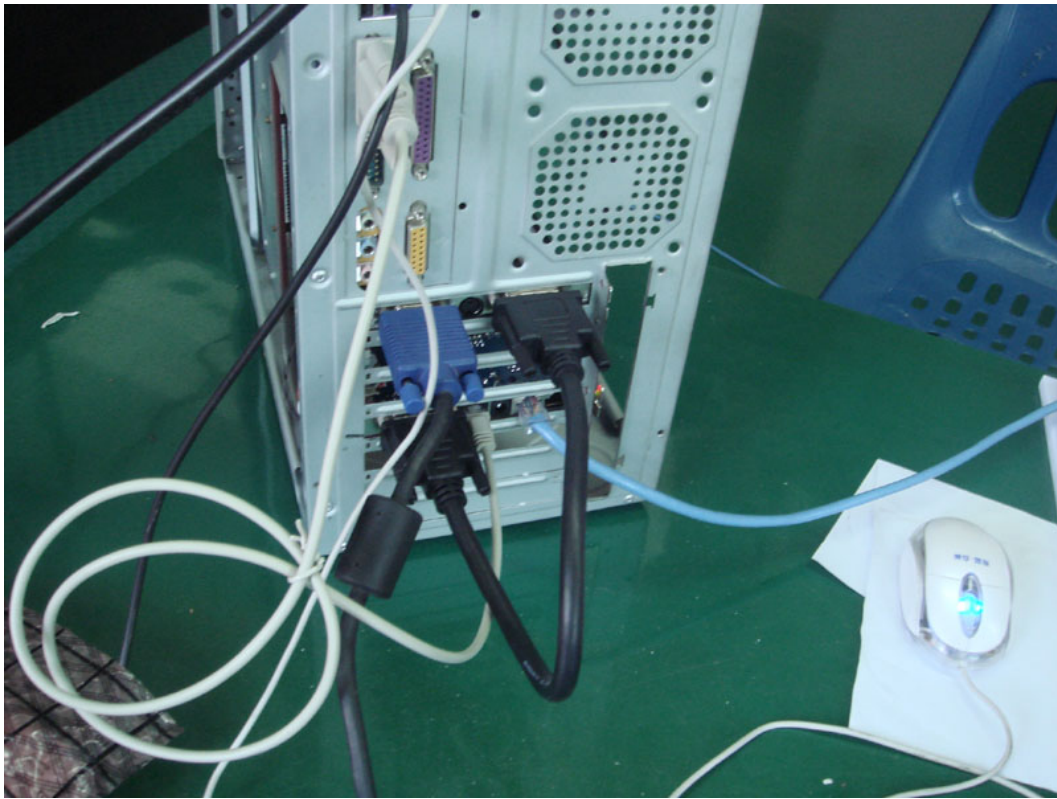


**Sending Card(right) and Display Card(left)**

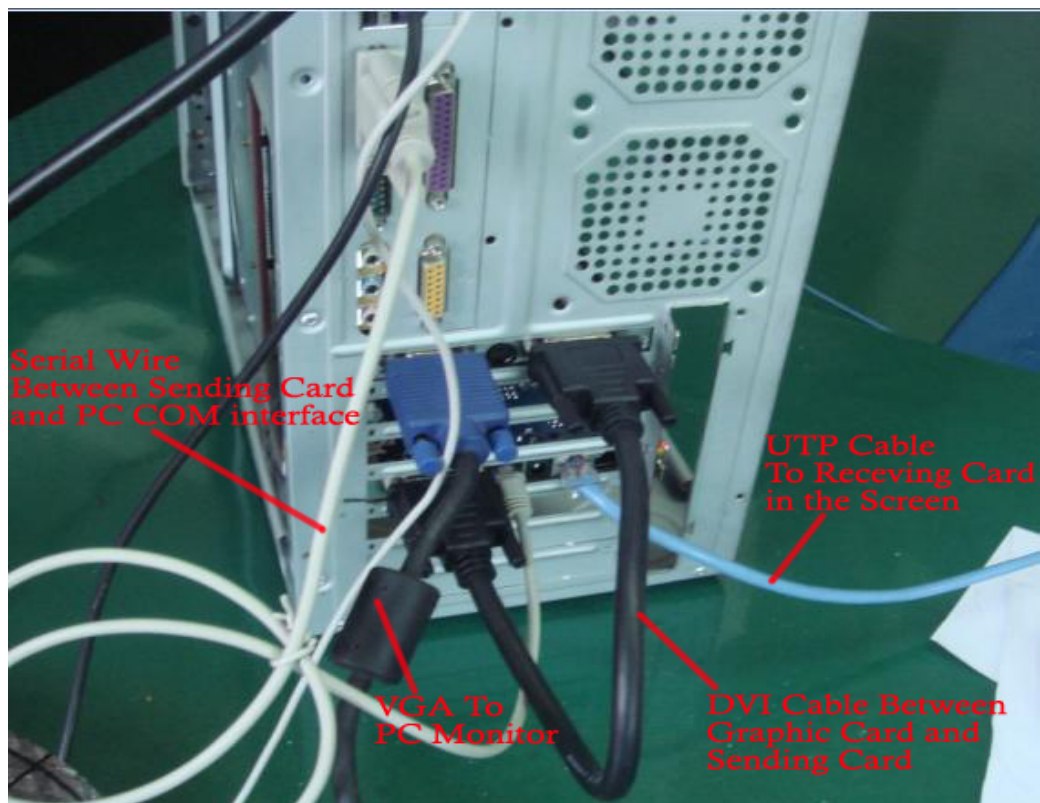


**Two cards fixed in the computer**

## [Linsn](#) LED Control System and LEDStudio Installation Manual



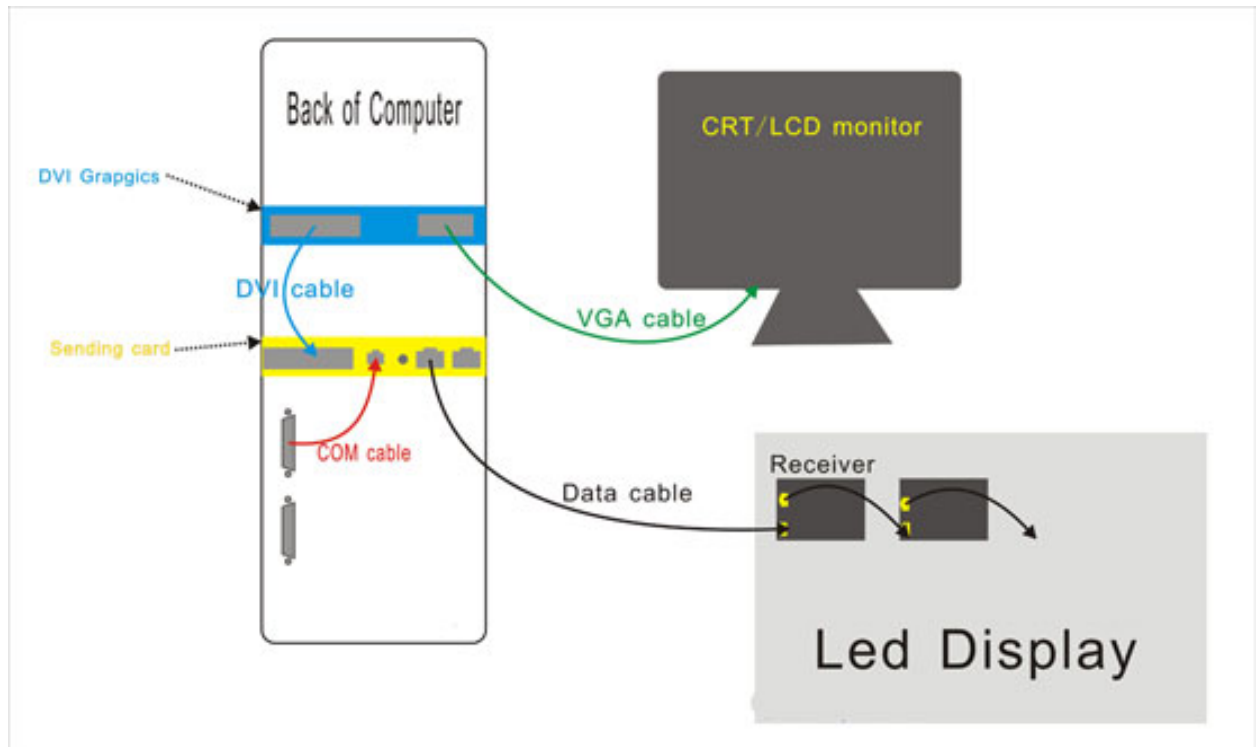
The connection of these 2 cards look like





# [Linsn](#) LED Control System and LEDStudio Installation Manual

The Full Link look like:



## Step 5

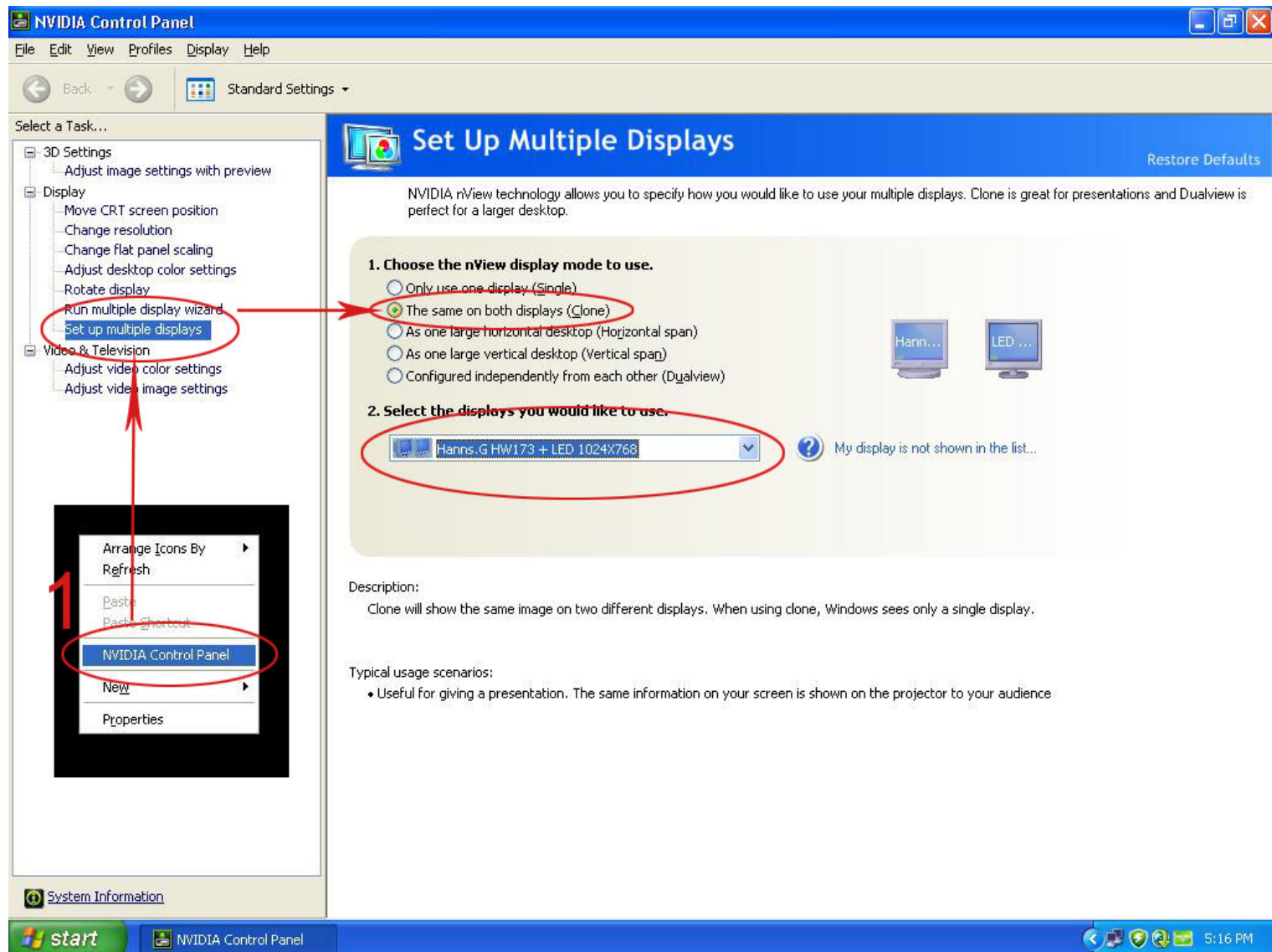
After finishing the installation of the sending card and display card, please use the long signal cable to connect the sending card in the computer with the connector on the first cabinet.

## Step 6

Feeding the electricity to these 15 cabinets. and use the LEDStudio to control it

# [Linsn](#) LED Control System and LEDStudio Installation Manual

## How to Config the DVI Graphic Card in the Controlling PC.



# [Linsn](#) LED Control System and LEDStudio Installation Manual

How to Load the **CON files**(connection files of 5x3) Pictures as below:

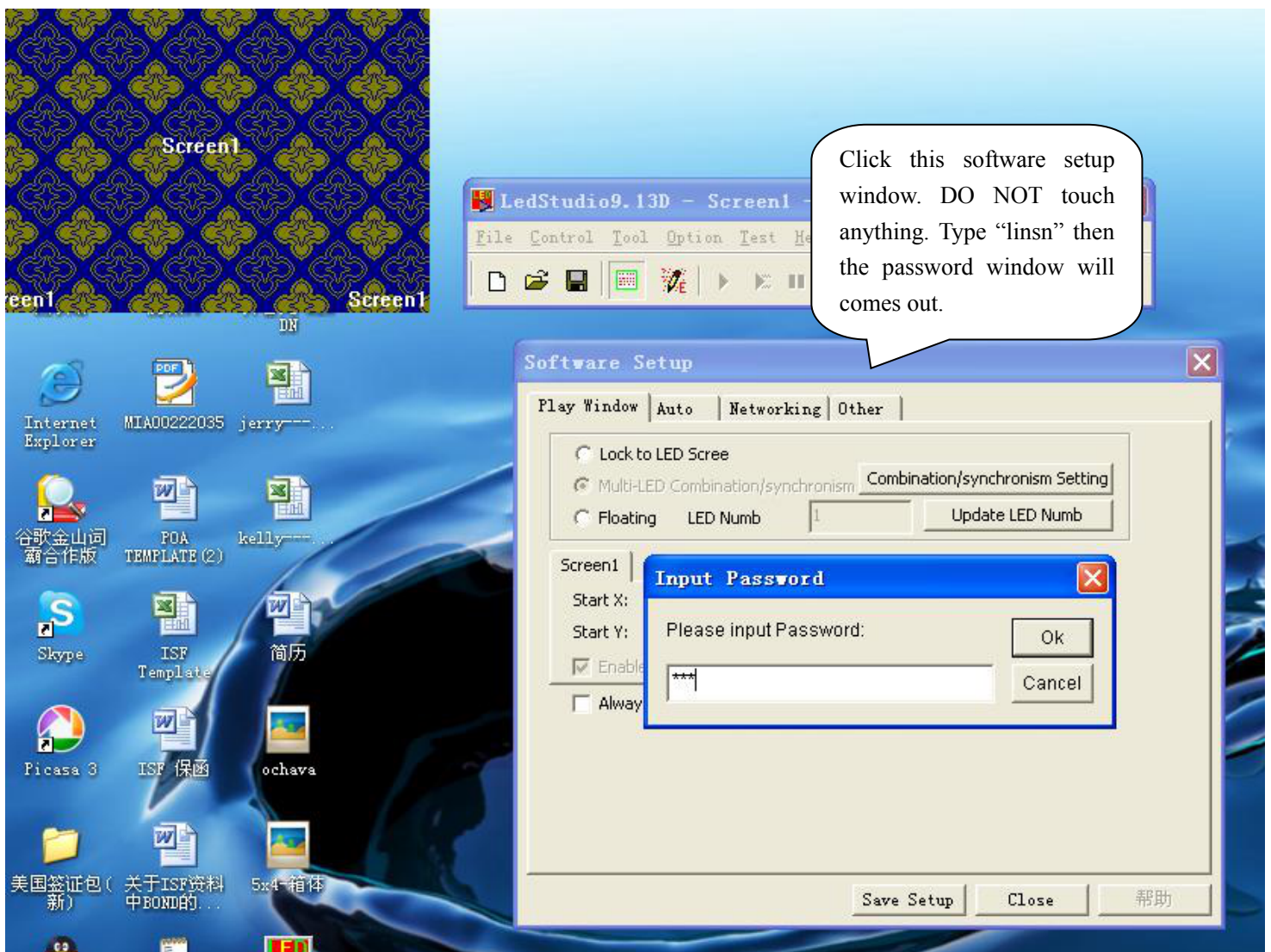
## 1. Run the LEDstudio.→Options→ Software Setup.





# [Linsn](#) LED Control System and LEDStudio Installation Manual

2. Click the Software setup window. **DO NOT TOUCH anything. Just type “linsn”** then will appear a password window, the password is: “168”



# Linsn LED Control System and LEDStudio Installation Manual

## 3.Loading the CON files. Send it to the receiver, and save it to the receiver.

Software Setup

Play Window | Auto | Networking | Other

☐ Lock to LED Scree

☒ Multi-LED Combination/synchronism Combination/synchronism Setting

☐ Floating

Screen1

Start X:

Start Y:

☒ Enable

☐ Always

Setup hardware parameters

Sender | Receiver | Display connection | Corrected

Set mode: ☐ Simple ☒ Normal ☐ Complex ☐ Use Auto-link

Remark: The dialog of settings for single or multi regulation led-screen.

Display QTY:  Update display QTY

display 1

Type: real pixel display

☒ Gamma ☐ 2.8 ☐ define ☐ Edit

	1	2	3	4	5
2	Network cab order No. 1 width:64 height:48	Network cab order No. 1 width:64 height:48	Network cab order No. 1 width:64 height:48	Network cab order No. 1 width:64 height:48	Network cab order No. 1 width:64 height:48
3	Network cab order No. 6 width:64 height:48	Network cab order No. 7 width:64 height:48	Network cab order No. 8 width:64 height:48	Network cab order No. 9 width:64 height:48	Network cab order No. 1 width:64 height:48
4	Network cab order No. 5 width:64 height:48	Network cab order No. 4 width:64 height:48	Network cab order No. 3 width:64 height:48	Network cab order No. 2 width:64 height:48	Network cab order No. 1 width:64 height:48

Main cable  No. sender U cab

Order No.  Width  Height

Save Card for maintain Load from file Save to file Send to receiver Save to receiver Exit Help

1. Click any of them to active the files before “ send to receiver”

2. This is the first input cable ,if not, please let us know.

Load from the CON files. Then “Send to receiver”...then “Save to receiver”

## 4.Then you can play the video using the controlling computer.

# [Linsn](#) LED Control System and LEDStudio Installation Manual