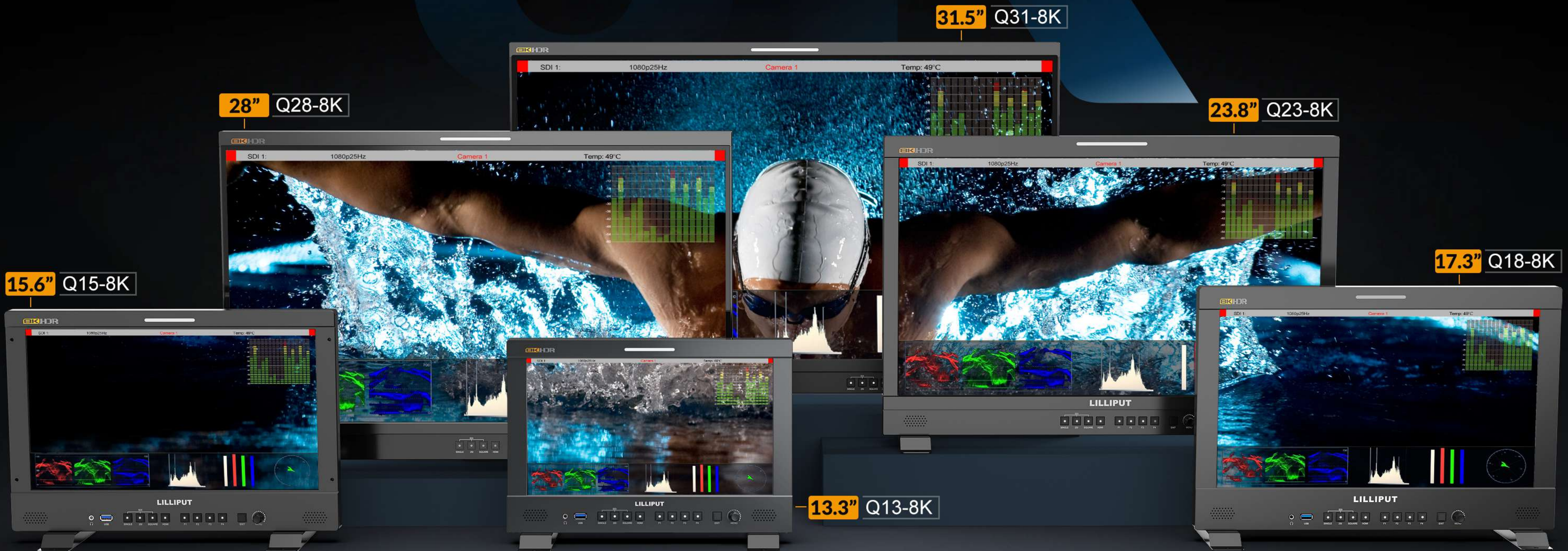


8K | 12G-SDI PRODUCTION MONITORS

Production / Broadcast monitor for professional camcorder & video camera
Application for video post production & making movies.





8K 12G-SDI SIGNAL

Combine four 4K 60Hz video signals into one 8K 60Hz video signal using a quad-link 12G-SDI connection.



Support Up to 8K 60Hz Video

In addition to the different 4K 60Hz video signals provided by four single-link 12G-SDI, the monitor with four 12G-SDI interfaces is also compliant with the ST2082-12 video protocol standard and can generate video signals up to 8K 60Hz.

12G-SDI Single-Link

ST2082-10
1x12G-SDI



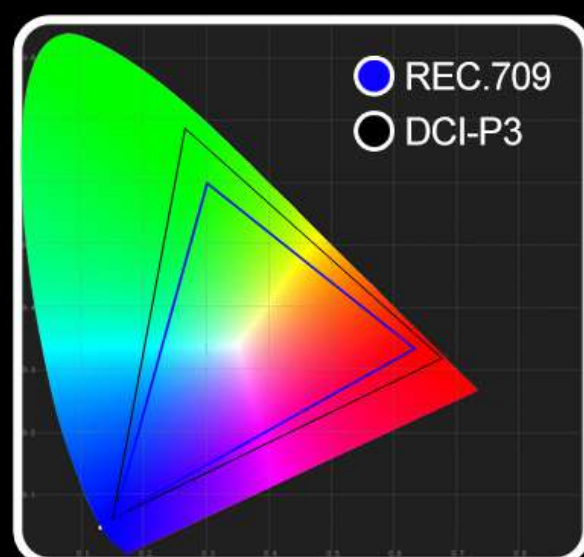
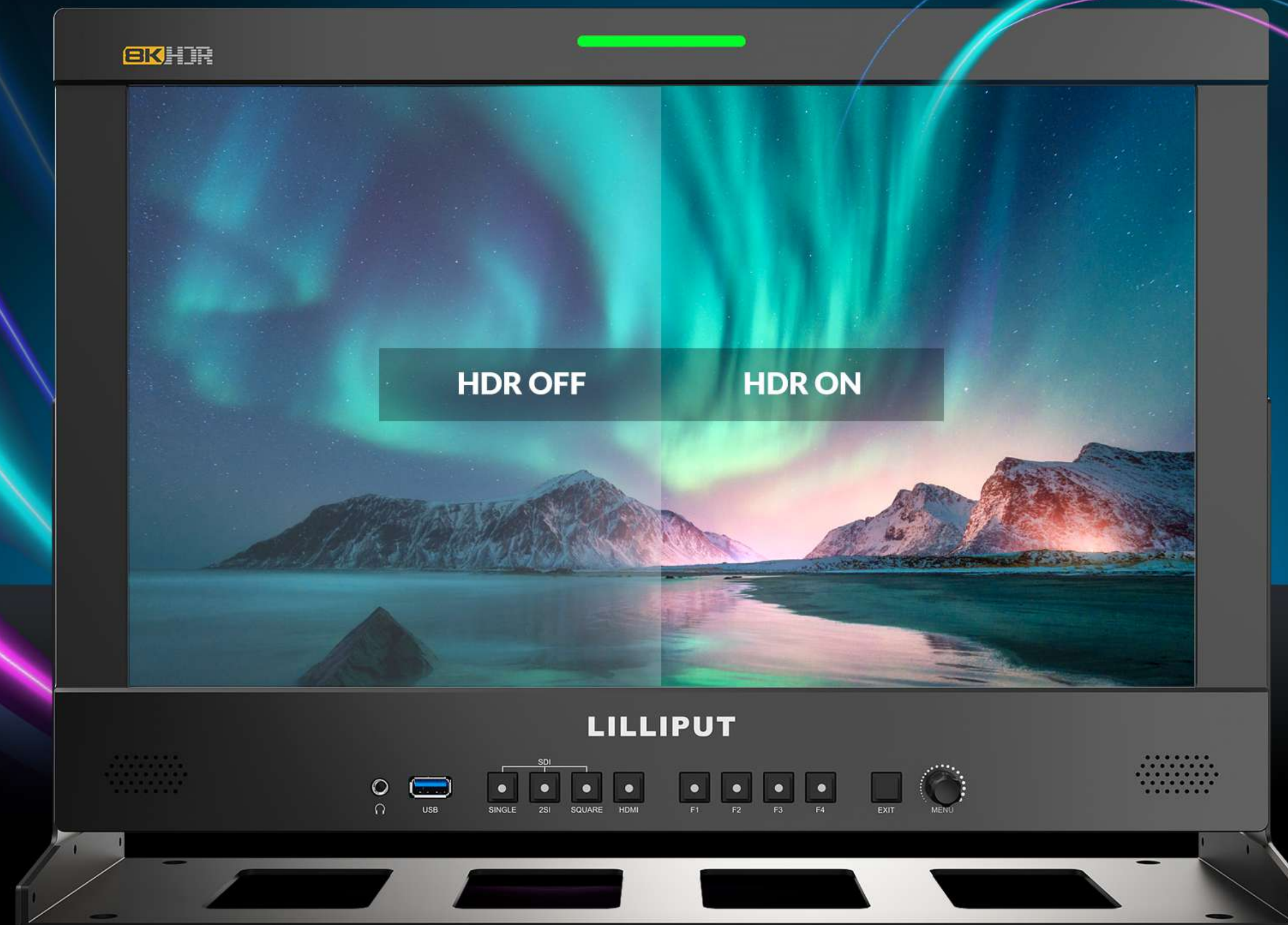
12G-SDI Quad-Link

ST2082-12
4x12G-SDI



Accurate Color Calibration

A specific calibration to reproduce the colors of the image color space.
Color calibration supports the PRO/LTE version of ColourSpace CMS by Light Illusion.



COLOR SPACE
90%+ DCI-P3 Color Space.



COLOR CALIBRATION
Different calibrated color spaces such as Rec.709, NTSC, DCI-P3 can be selected.



3D LUT
Built-in 3D-LUT, featuring 17 default logs and 6 user logs.



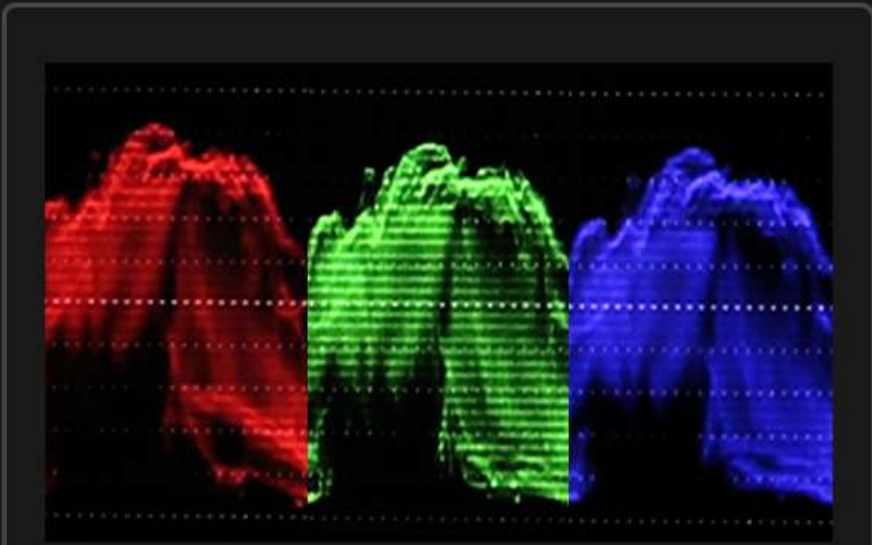
LAN / RS422

Select an appropriate port from LAN or RS422 to connect to the user's operating interface, allowing the application to identify the monitor before control.

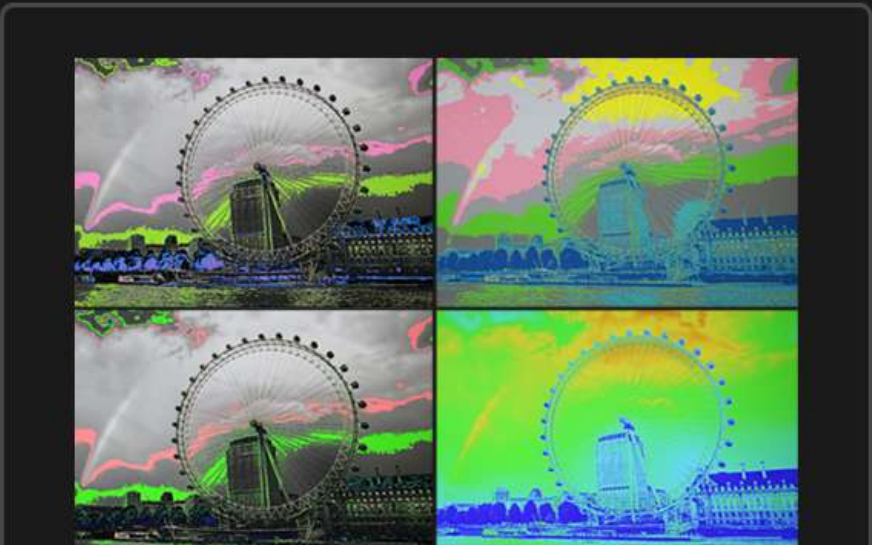


Remote Control Application

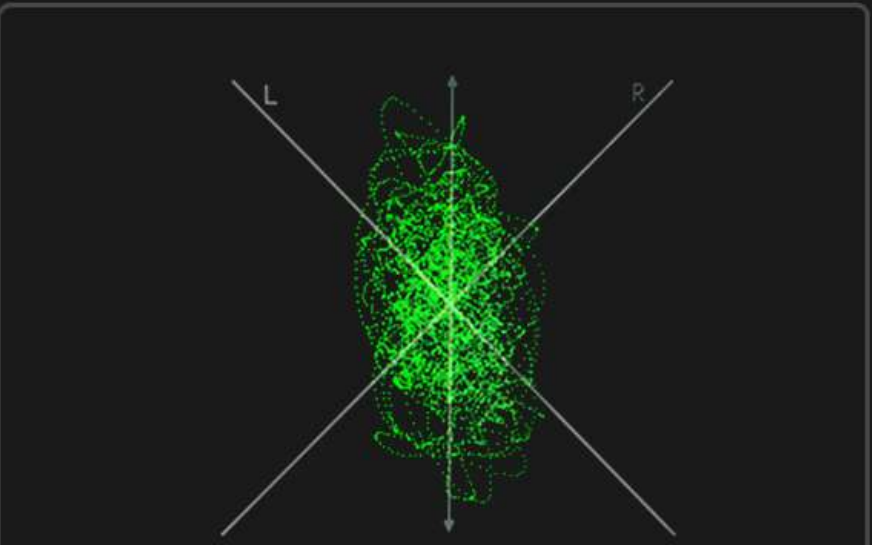
Connect your computer to control the monitor via applications. The interfaces of RS422 In and RS422 Out can realize synchronization control of multiple monitors.



Waveform



False Color



Audio Vector (Lissajous)

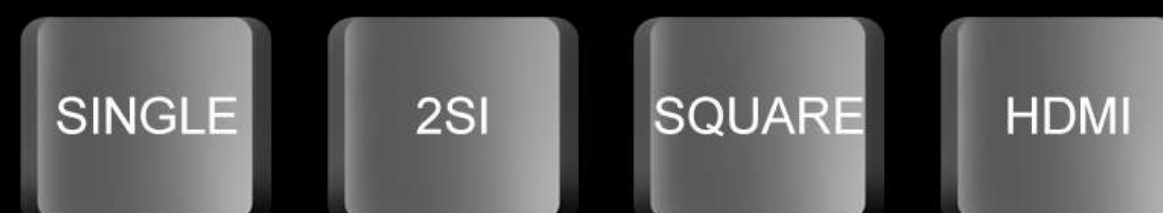
- Quad-Split
- Color Temp
- Color Space
- 3D-LUT
- HDR
- Gamma
- UMD
- Time code
- Remote
- Vector scope
- Waveform
- Audio Vector
- Level meter
- Histogram
- Exposure
- Peaking
- False color
- Check field
- Color bar
- Pixel zoom
- Pix to pix
- Marker
- Freeze
- H/V Delay

Quad Split Multiview

In Quad-Split Multiview mode, any input signals can be selected and changed among 12G-SDI, HDMI2.0 and 12G-SFP+. Moreover, images can be differentiated with colorful borders to enhance the senses of monitoring.



When the quad split multiview function is turned on, there are four buttons that will turn into signal switching function, and each button corresponds to one image respectively. The photographer can quickly switch between different input signals through these four buttons.



RACK MOUNT

INTELLIGENT SDI MONITORING

It has a various of mounting methods for broadcast, on-site monitoring and live broadcast truck, etc. The 13.3", 15.6" and 17.3" monitors' housing can be perfectly embedded in a 19-inch cabinet. These monitors are featured with mutiview functions that allow users to check out different video signals at the same time, making it easy to create a multi-camera monitoring scenario.



VESA 75/100MM HOLES

POWER SWITCH

12-24V DC POWER

12G SFP+

**Optical Fiber Module Is Optional

HDMI 2.0 IN/OUT

4×12G-SDI IN/OUT

LAN IN

RS422 IN/OUT

GPI IN

Easy-to-use

F1~F4 user-definable buttons to custom auxiliary functions as shortcut, such as peaking, waveform and histogram. Use the rotary button to select and adjust the value among of sharpness, saturation, tint and volume, etc.





Base Mount



Gimbal Bracket (Optional)
13.3" / 15.6" / 17.3" Available



Carrying Case (Optional)
15.6" / 17.3" / 23.8" / 28" Available



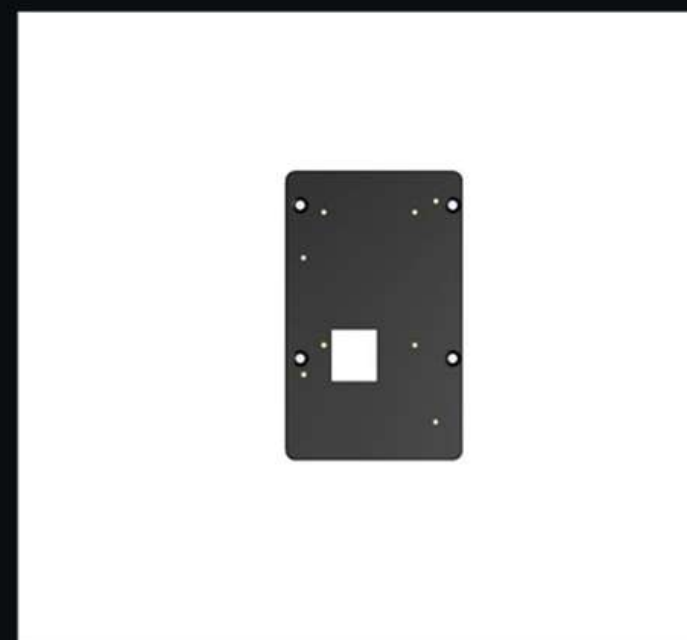
Rack Mount (Optional)
13.3" / 15.6" / 17.3" Available

ACCESSORIES

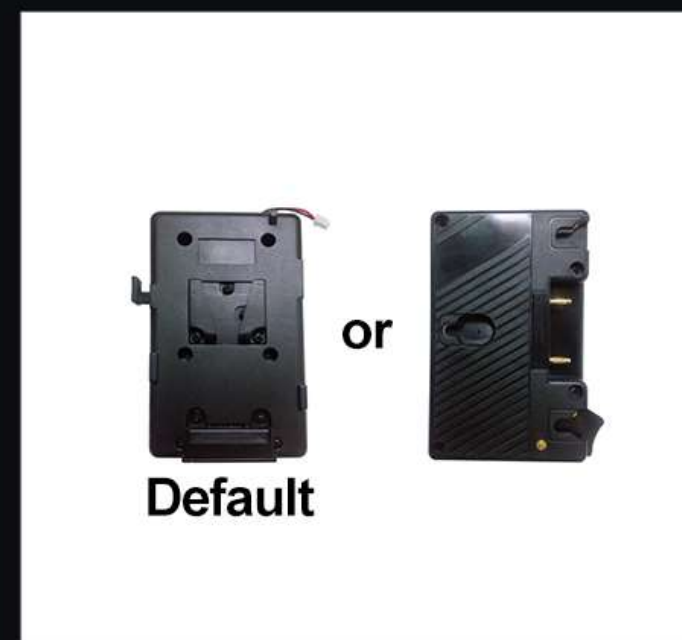
STANDARD



15V DC Adapter



VESA Mount Plate



or
Default

Battery Plate



Base Bracket



USB Flash Disk

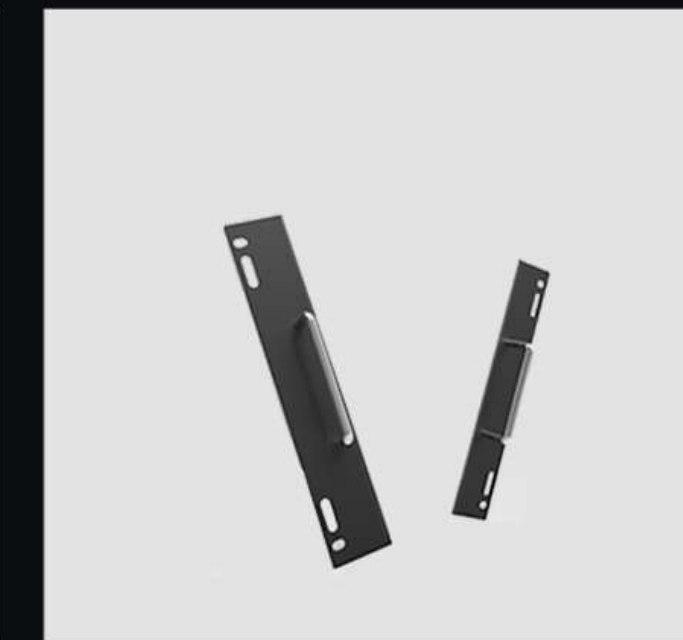
OPTIONAL



SFP Optical Fiber Module



Carrying Case + Sunshade
15.6" / 17.3" / 23.8" / 28" Available



Rack Mount Bracket
13.3" / 15.6" / 17.3" Available



Gimbal Bracket
13.3" / 15.6" / 17.3" Available



Acrylic Screen Protector
15.6" Available

SPECIFICATIONS

Q13-8K
Q15-8K
Q18-8K
Q23-8K
Q28-8K
Q31-8K

DISPLAY	Panel	13.3"	15.6"	17.3"	23.8"	28"	31.5"
	Physical Resolution	3840×2160	3840×2160	3840×2160	3840×2160	3840×2160	3840×2160
	Aspect Ratio	16:9	16:9	16:9	16:9	16:9	16:9
	Brightness	300cd/m ²	600cd/m ²	400cd/m ²	300cd/m ²	300cd/m ²	350cd/m ²
	Contrast	1000:1	1700:1	1200:1	1000:1	1000:1	1300:1
	Viewing Angle	178°/ 178°(H/V)	170°/ 170°(H/V)	170°/ 170°(H/V)	178°/ 178°(H/V)	178°/ 178°(H/V)	178°/ 178°(H/V)
	HDR	ST2084 300/1000/10000/HLG					
	Supported Log formats	SLog2 / SLog3 / CLog / NLog / ArriLog / JLog or User...					
	Look up table (LUT) support	3D LUT (.cube format)					
VIDEO INPUT	SDI	4×12G (Supported 8K-SDI Formats Quad Link)					
	SFP	1×12G SFP+(Fiber module for optional)					
	HDMI	1×HDMI 2.0					
VIDEO LOOP OUTPUT	SDI	4×12G (Supported 8K-SDI Formats Quad Link)					
	HDMI	1×HDMI 2.0					
SUPPORTED FORMATS	SDI	4320p24/25/30/50/60, 2160p 24/25/30/50/60, 1080p 24/25/30/50/60, 1080pSF 24/25/30, 1080i 50/60...					
	SFP	2160p 24/25/30/50/60, 1080p 24/25/30/50/60, 1080pSF 24/25/30, 1080i 50/60...					
	HDMI	2160p 24/25/30/50/60, 1080p 24/25/30/50/60, 1080i 50/60, 720p 50/60...					
Audio In/Out (48kHz PCM Audio)	SDI	16ch 48kHz 24-bit					
	HDMI	8ch 24-bit					
	Ear Jack	3.5mm					
REMOTE CONTROL	Built-in Speakers	2					
	RS422	In/out					
	GPI	1					
POWER	LAN	1					
	Input Voltage	DC 12-24V					
	Power Consumption	≤36W (15V)	≤37W (15V)	≤40W (15V)	≤60W (15V)	≤65W (15V)	≤79W (15V)
	Compatible batteries	V-Lock or Anton Bauer Mount					
ENVIRONMENT	Input voltage (battery)	14.8V nominal					
	Operating Temperature	0°C~50°C					
	Storage Temperature	-20°C~60°C					
OTHER	Dimension(LWD)(mm)	340×232.8×46	393×267×41.4	433.9×294.2×45.7	567×376.4×45.7	638×414.3×45.7	717.5×461.7×47.4
	Weight	2.4kg	2.9kg	3.9kg	7.4kg	8.6kg	13.0kg

Note: Due to constant effort to improve products and product features, specifications may change without notice.

www.lilliput.com

ZHANGZHOU LILLIPUT ELECTRONIC TECHNOLOGY CO., LTD.

Add : No.26, Fuqi North Road, Zhang Zhou, Fu Jian, 363005, China
Tel: +86-596-2109323 Facebook: @lilliputmonitor Email: sales@lilliput.com

