

# 7" 2000 NITS ULTRA-BRIGHT TOUCH CAMERA CONTROL MONITOR



2000 Nits



1920×1200



Touch Screen



Dual Batteries



Camera Control



3G-SDI / HDMI2.0



HT7S

LILLIPUT

PUSH

EAR

IN SDI OUT USB IN HDMI OUT DC 7-24V



# 2000 NITS

## AUTO DIMMING

7" 1920×1200 physical resolution, with 2000 nits ultra high brightness for outdoor sunlight readable.

### COLOR CALIBRATION

Color calibration supports the PRO/LTE version of ColourSpace CMS provided by Light Illusion.

\*Default color calibration to 100% BT.709

### HDR

Making lighter and darker details to be displayed more clearly. Support ST2084 300 / ST2084 1000 / ST2084 10000 / HLG.

### 3D LUT

Built-in 3D-LUT, featuring 17 default logs and 6 user logs.



# TOUCH CONTROL

## EASY TO USE

Easy and convenient touch commands to quickly wake up the menu on screen, then adjust camera assist functions, display and settings.



FUNCTIONS



VOLUME



BACK LIGHT



DISPLAY



ZOOM IN



ZOOM POSITION

\*Note: Touch function can be switched off by POWER button.

# CONTROL CAMERA

BY LANC CABLE

The LANC cable enables the monitor to be interfaced with the Sony video camera for the purpose of controlling some camera's functions.

## HOW TO CONTROL?



### UI FOR CAMERA CONTROL


Tap the "camera" icon on the right of menu to access the UI of camera control.



### ACTIONS FEEDBACK

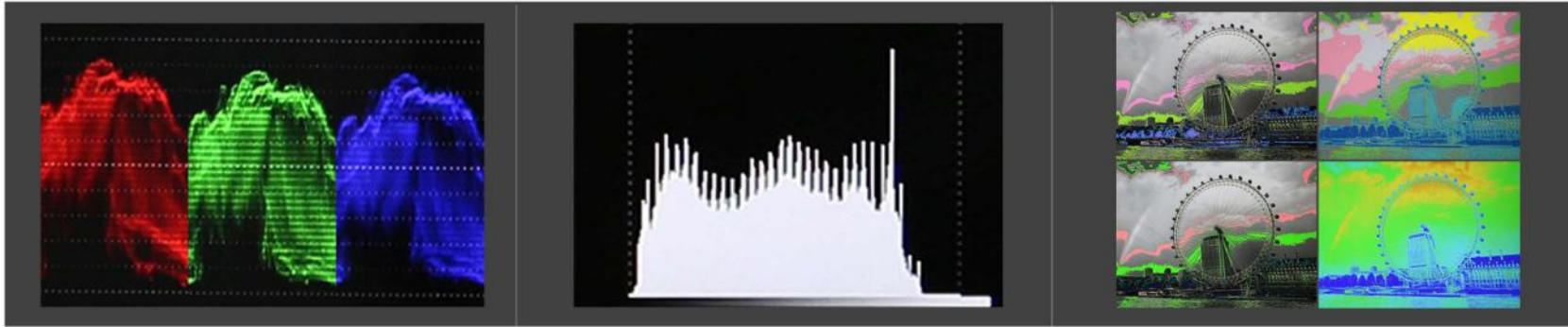
Users can control camera's functions and menus directly on the monitor.

## HOW TO CONTROL?

FOCUS	ZOOM	IRIS	
Controlling the focus of video camera.	Controlling the zoom in and out of video camera lens.	Controlling the aperture size of video camera.	Controlling the record function of video camera on and off.

\*Note: Some cameras do not support all control functions.





WAVEFORM

HISTOGRAM

FALSE COLOR



ANAMORPHIC DE-SQUEEZE

PEAKING FOCUS

EXPOSURE

# CAMERA ASSIST FUNCTIONS

-  Vector scope
-  Waveform
-  3D LUT
-  HDR
-  Pixel zoom
-  Level meter
-  Peaking
-  False color
-  Histogram
-  H/V Delay
-  Exposure
-  Check field
-  Image flip
-  De-squeeze
-  Marker
-  Freeze
-  Timecode



## 3G-SDI

UP TO 1080P 60HZ

Equipped with 3G-SDI input and loop output interfaces, which support up to 1080p 60Hz video signal.



## HDMI 2.0

UP TO 2160P 60HZ

Equipped with HDMI 2.0 input and loop output interfaces, which support up to 2160p 60Hz video signal.



# WIRELESS VIDEO

## TRANSMISSION

Any device with an NP-F series battery plate can be mounted.



## NP-F Battery Plate Adapter

This adapter allows for easy docking of external devices and powering external devices through the monitor.



## Power to External Device

When external device and battery are installed at the same time, the battery can power not only monitor but also the external device.

# SPECIFICATIONS

DISPLAY	Touch Screen	Capacitive touch
	Panel	7" LCD
	Physical Resolution	1920×1200
	Aspect Ratio	16:10
	Brightness	2000 nits
	Contrast	1200:1
	Viewing Angle	160°/ 160°(H/V)
	Color Space	100% BT.709
	HDR Supported	HLG; ST2084 300/1000/10000
INPUT	HDMI	1 (HDMI 2.0)
	3G-SDI	1
OUTPUT	HDMI	1 (HDMI 2.0)
	3G-SDI	1
SUPPORTED FORMATS	HDMI	2160p 24/25/30/50/60, 1080p 24/25/30/50/60, 1080i 50/60, 720p 50/60...
	3G-SDI	1080p 24/25/30/50/60, 1080pSF 24/25/30, 1080i 50/60, 720p 50/60...
AUDIO IN/OUT	Speaker	1
	HDMI	8ch 24-bit
	Ear Jack	3.5mm - 2ch 48kHz 24-bit
POWER	Input Voltage	DC 7-24V
	Power Consumption	≤16W (15V)
ENVIRONMENT	Operating Temperature	0°C~50°C
	Storage Temperature	-20°C~60°C
DIMENSION	Dimension(LWD)	186mm × 128mm × 29mm
	Weight	520g





# ACCESSORIES

## STANDARD



0.8M HDMI A-D Cable



LANC Cable



Hot Shoe Mount



USB Drive Disk

## OPTIONAL



12V 2A DC Power Adapter



Battery Plate Adapter



Wireless Video Transmission



Handbag