

User Guide



IMPORTANT SAFETY INSTRUCTIONS:

- Please read User Guide before using this product.
- Please keep User Guide for future reference.
- Please read the cautions to prevent possible danger and loss of property.

FEATURES:

- 2 inch 1RU rack mount monitor with 8 displays
- Resolution: 640x240;
- Brightness: 250cd/m²;
- Contrast: 300:1;
- Firm & slim design.

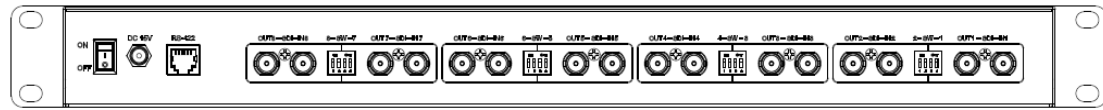
CAUTIONS:


1. Please do not place the display screen towards the ground.
2. Please avoid heavy impact or drop onto the ground.
3. Please do NOT use chemical solutions to clean this product. Please wipe with a clean soft cloth to maintain the brightness of the surface.
4. Please do not block any vent hole.
5. Please follow the instructions and trouble-shootings to adjust the product. Other improper adjustment may result in damage. Any further adjustment must be performed or conducted by a qualified technician.
6. Please unplug the power if long-term no-use, or thunder weather.


Contents

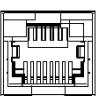
1. PRODUCT DESCRIPTION	2
2. PC OPERATING STEPS	3
3. PARAMETERS.....	4
4. ACCESSORIES	4
5. TROUBLE SHOOTING	5

1. PRODUCT DESCRIPTION

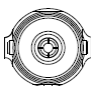


1.  Power switch: “o” is power off; “I” is power on.


2.  15V metal screw-thread DC power jack.

3.  RS422 input.

SDI OUT

4.  SDI output interface.

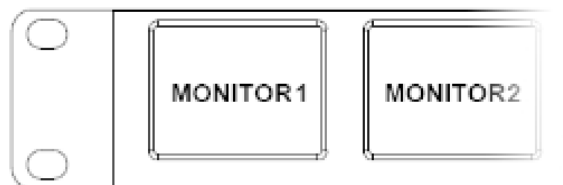
SDI IN

5.  SDI input interface.

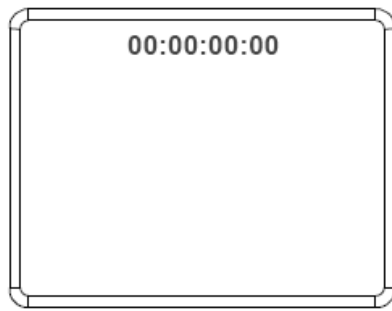
6.  DIP Switch

6-1. Switch 1&2 control the (even number) monitors on the left of DIP Switch; Switch 3&4 control the (uneven number) monitors on the left of DIP Switch.

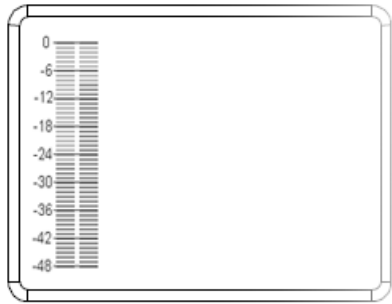
For example, Switch 1&2 control monitor2; Switch 3&4 control monitor1.



6-2. Switch 1&3 as time code switch.

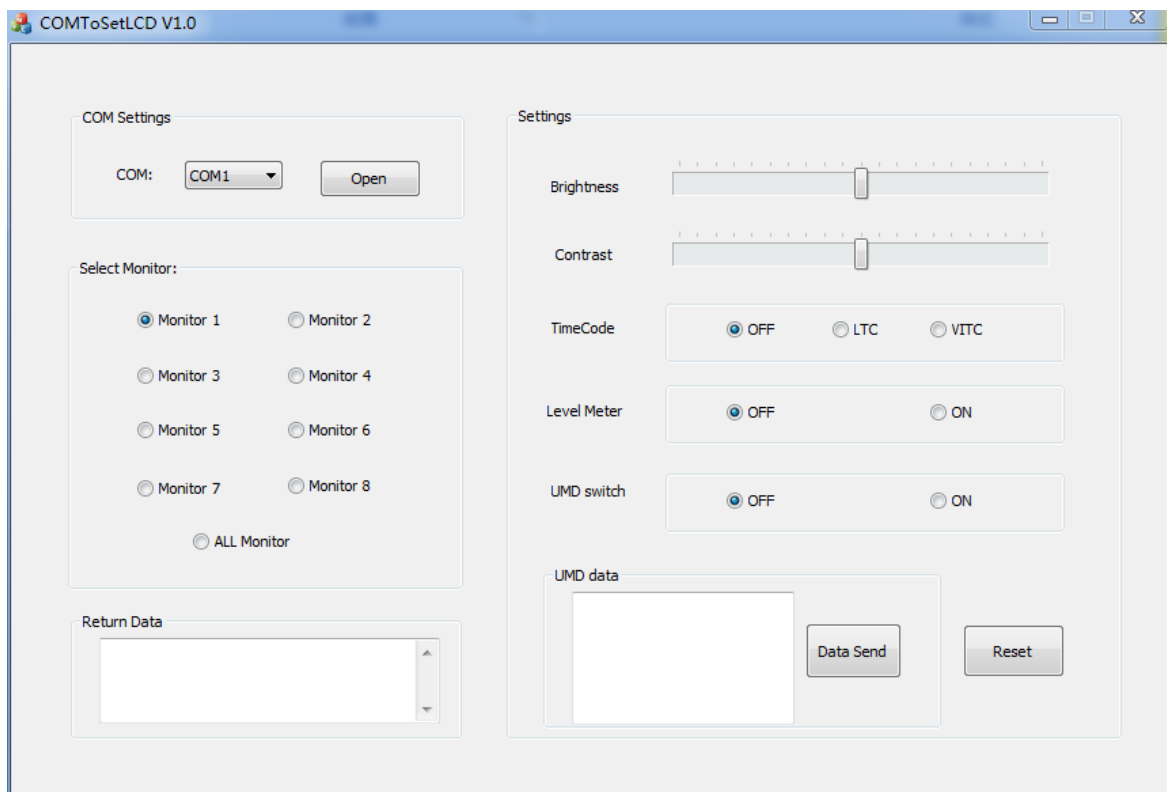


6-3. Switch 2&4 as audio level meter switch.



2、 PC OPERATING STEPS

1. Double-click to open the PC software "COMToSetLCD", pop-up window as follows.



2. In Com Settings, select the hardware connection by serial interface, click the Open button to open the serial port.
3. Choose monitor wants to control in the column of Select Monitor; however, the software can only control a single monitor or all of the them., it will return a response after selection, then can view the response state in the Return

Data.

4. Settings contains all functions to control the device as follows,

- (1) Brightness control
- (2) Contrast control
- (3) Time code switch
- (4) Level meter function switch
- (5) UMD switch function. UMD character sending window can enter not more than 32 half-width characters after function activated, click Data Send button will display entered characters on the screen.

3、PAPAMETERS

Panel	2 inch
Physical Resolution	640x240
Aspect Ratio	4 : 3
Brightness	250 cd/m ²
Contrast	300: 1
Viewing Angle	80°/ 70°(H/V)
Input Signal	8x3G-SDI, RS422
Output Signal	8x3G-SDI
Input Voltage	DC12-24V
Operating Temperature	-20°C ~ 55°C
Storage Temperature	-30°C ~ 70°C
Power Consumption	≤23W
Dimension (LWD)	482.5x105x44mm
Weight	1555g

4、ACCESSORIES



1

1. 15V DC adapter



2

2. CD drive



3

1piece

1piece

5、 TROUBLE SHOOTING

Power on but no pictures:

Check whether the SDI cables correctly connected or not. Please use the standard power adapter coming with the product package. Improper power input may cause the device damage.

Note: due to constant effort to improve products and product features, specifications may change without notice.